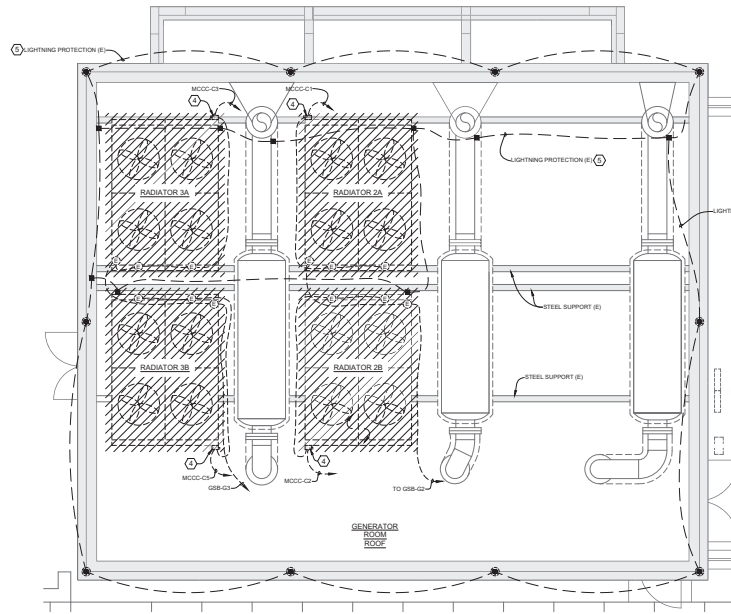


1 GENERATOR ROOM ROOF TOP - MECHANICAL - DEMOLITION
SCALE: 1/4\"/>



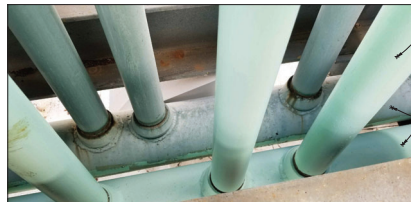
2 GENERATOR ROOM ROOF TOP - ELECTRICAL - DEMOLITION
SCALE: 1/4\"/>

NOTES INDICATED BY NUMBER IN ①

- EXISTING ROOFTOP RADIATOR (SHOWN HATCHED) AND APPURTENANCES TO BE REMOVED. EXISTING RADIATOR STEEL SUPPORTS STRUCTURE TO REMAIN TO BE RE-USE.
- EXISTING 2\"/>

NOTE

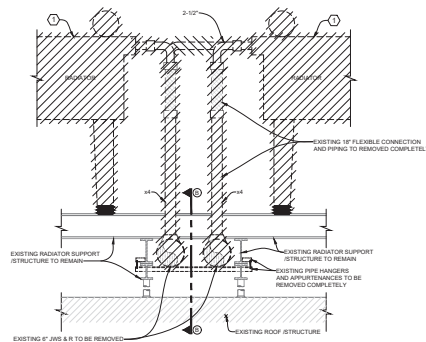
ANY AND ALL EQUIPMENT ON ROOF AND ROOF FLEET TO BE PROTECTED DURING ALL PHASES OF CONSTRUCTION.



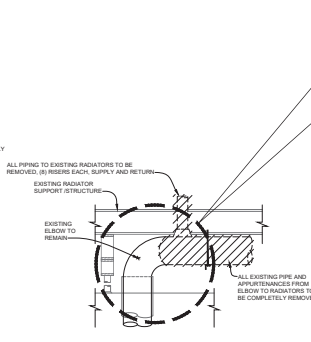
③ IMAGE - PIPING - DEMOLITION
SCALE: NONE

MOTOR CONTROL CENTER (EXISTING)													
CMT NO.	DESCRIPTION	MOTOR DATA				CIRCUIT BREAKER				STARTER DATA			
		H.P.	VOLTS	Ø	F.L.A.	KVA	AMP(RATING)	TYPE	TRIP	TYPE	NOTES	CONDUCTORS	GND.
A1	SPACE												
A2	RADIATOR FAN RP-1	12	480	3	20.4	16.3	30	MCB	2	FWRK			
A3	SPACE												
A4	FUEL RETURN PUMP #1 (RP-1)	1	480	3	1.6	1.4	3	MCB	1	FWRK			
A5	FUEL RETURN PUMP #2 (RP-2)	1	480	3	1.6	1.4	3	MCB	1	FWRK			
B1	SPACE												
B2	ENG. EXH. FAN (EF-4)	30	480	3	40	32	100	MCB	3	FWRK		(1) #6	#10 1"
B3	ENG. EXH. FAN (EF-4)	30	480	3	40	32	100	MCB	3	FWRK		(1) #6	#10 1"
B4	ENG. EXH. FAN (EF-5)	30	480	3	40	32	100	MCB	3	FWRK			
C1	RADIATOR FAN RP-2A	12	480	3	20.4	16.3	30	MCB	2	FWRK		(1) #10	#10 3/4"
C2	RADIATOR FAN RP-2B	12	480	3	20.4	16.3	30	MCB	2	FWRK		(1) #10	#10 3/4"
C3	RADIATOR FAN RP-2A	12	480	3	20.4	16.3	30	MCB	2	FWRK		(1) #10	#10 3/4"
C4	SPACE												
C5	RADIATOR FAN RP-2B	12	480	3	20.4	16.3	30	MCB	2	FWRK		(1) #10	#10 3/4"

3 SCHEDULE - MOTOR CONTROL CENTER 'MCCC' (EXISTING)
SCALE: 1/4\"/>



④ DETAIL - RADIATOR PIPING - EXISTING
SCALE: NONE



⑤ DETAIL - PIPE PENETRATION DOWN THRU ROOF - DEMOLITION
SCALE: NONE



PROJECT: Generator Room Roof Top Demolition
DATE: 08/16/2019
DRAWN BY: JMS
CHECKED BY: JMS
SHEET: ME-2

GENERATOR RADIATOR REPLACEMENTS
AT THE
VERICON TECH CENTER BUILDING 'G'
7701 EAST TELCOM PARKWAY
TEMPLE TERRACE, FLORIDA

PROJECT NO: 20072
DRAWN BY: JMS
CHECKED BY: JMS
SHEET: ME-2